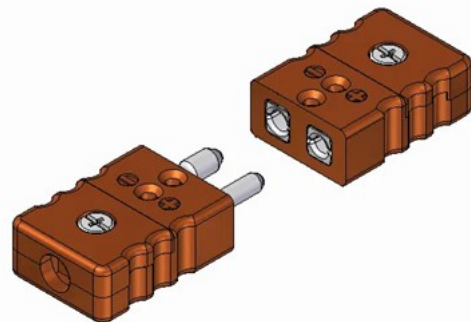
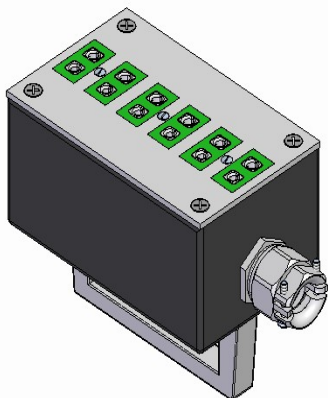
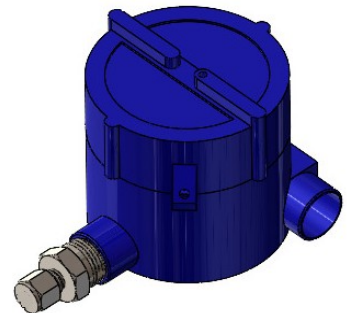
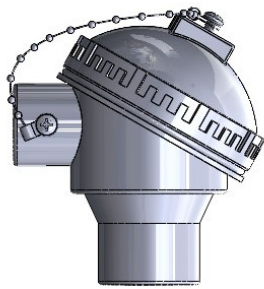
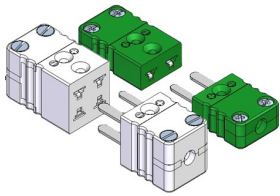




## THERMOCOUPLE CONNECTORS AND ACCESSORIES



**Thermocouple fitting** is used in applications where a thermocouple needs to be connected to an application, control system, or other measurement instruments. The fitting ensures that the thermocouple wire is securely connected and often provides electrical insulation, protection, or sealing depending on the application.

There are a few types of thermocouple fittings:

1. **Compression fittings:** These provide a secure mechanical connection, often used in industrial settings. They compress the thermocouple wire to ensure a tight seal.
2. **Spring loaded oil seal fitting:** These fittings are used to install thermocouples and RTDs with thermowells, protection tube. Spring loaded A spring-loaded thermocouple fitting is a type of fitting used to ensure consistent contact between the thermocouple probe and the surface being measured, even when there is mechanical movement, thermal expansion, or vibration in the system.

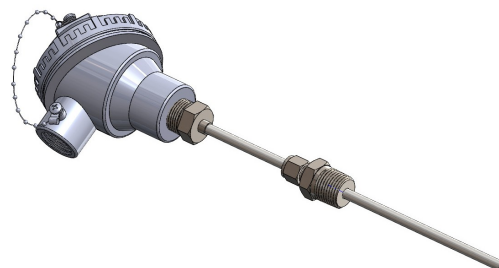
## COMPRESSION FITTINGS

PART NO.	ID	THREAD	MAT'L
CFT-116-18NPT	1/16"	1/8 MNPT	316 SS
CFT-18-18NPT	1/8"	1/8 MNPT	316 SS
CFT-316-18NPT	3/16"	1/8 MNPT	316 SS
CFT-14-18NPT	1/4"	1/8 MNPT	316 SS
CFT-116-14NPT	1/16"	1/4 MNPT	316 SS
CFT-18-14NPT	1/8"	1/4 MNPT	316 SS
CFT-316-14NPT	3/16"	1/4 MNPT	316 SS
CFT-14-14NPT	1/4"	1/4 MNPT	316 SS
CFT-516-14NPT	5/16"	1/4 MNPT	316 SS
CFT-38-14NPT	3/8"	1/4 MNPT	316 SS
CFT-18-38NPT	1/8"	3/8 MNPT	316 SS
CFT-316-38NPT	3/16"	3/8 MNPT	316 SS
CFT-14-38NPT	1/4"	3/8 MNPT	316 SS
CFT-38-38NPT	3/8"	3/8 MNPT	316 SS
CFT-18-12NPT	1/8"	1/2 MNPT	316 SS
CFT-316-12NPT	3/16"	1/2 MNPT	316 SS
CFT-14-12NPT	1/4"	1/2 MNPT	316 SS
CFT-516-12NPT	5/16"	1/2 MNPT	316 SS
CFT-38-12NPT	3/8"	1/2 MNPT	316 SS
CFT-12-12NPT	1/2"	1/2 MNPT	316 SS



### NOTE:

TEFLON FERRULES ARE ALSO AVAILABLE USE "F" AFTER FIRST 3 LETTERS OF PART NUMBER WHEN ORDERING FITTING WITH TEFLON FERRULE E.G. "CFTF-18-12NPT"



### Typical Use

SPRING LOADED OIL SEAL NIPPLE				
PART NO.	ID	HEX	THREAD	MATERIAL
FTOS-316-1212	0.193	7/8"	1/2" MNPT	316 SS
FTOS-14-1212	0.260	7/8"	1/2" MNPT	316 SS



Typical Use